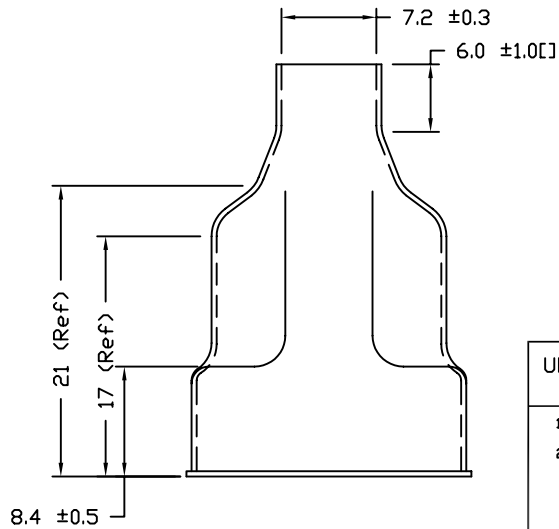
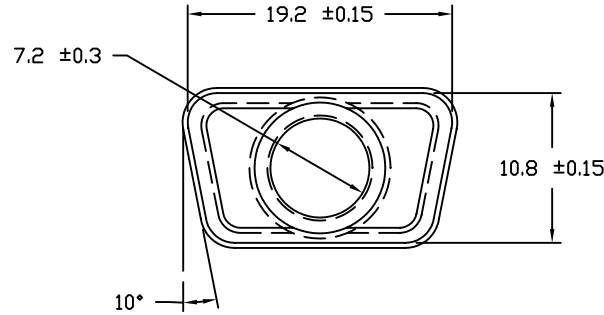
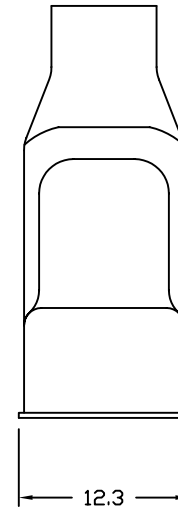
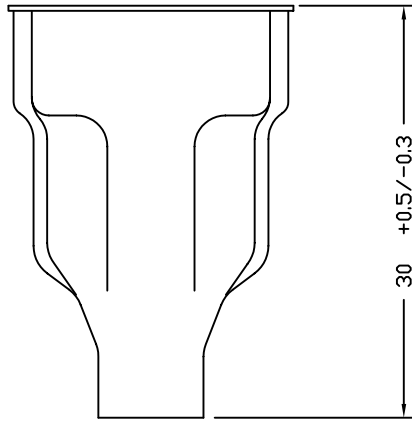


REV	DATE	DESCRIPTION	APP
A	12-AUG-05	ECN 0565	



NOTES:

1. MATERIAL: CR STEEL
2. FINISH: TIN PLATING
3. DIMENSIONS: MM
4. TOLERANCE:

X.XX	±.13	ANGLES
X.X	±.25	±1°
X.	±.50	
5. PART MUST BE IN COMPLIANCE TO: DIRECTIVE 2002/95/EC

THIS IS A CONTROLLED DOCUMENT AND IS SUBJECT TO CHANGE. CONTACT NORTHERN TECHNOLOGIES ENGINEERING FOR THE LATEST REVISION.

UNLESS OTHERWISE SPECIFIED		SIGNATURES	DATE	Northern Technologies		THIS DRAWING IS THE PROPERTY OF NORTHERN TECHNOLOGIES AND SHOULD NOT BE REPRODUCED WITHOUT NORTHERN TECHNOLOGIES WRITTEN PERMISSION.	
1. ALL DIMENSIONS ARE IN INCHES (MM) 2. DIMENSIONS ARE TYPICAL		DRAWN	JSD	19-APR-05	PART NUMBER (X)9PEM2		
		CHECKED	SCN	19-APR-05	DESCRIPTION 09C □/M CAN 7.2 MM EXIT (ROHS)		
		ENG					
		ISSUED		19-APR-05	SHEET 1	CODE 7100_095	DWG NO. 7100-500-095
				SCALE N.T.S.			SHEET 1 OF 1